



Powell®



POWELL ELECTRONICS

SOLUTIONS FOR MEDICAL APPLICATIONS



+123-456-7890



www.powell.com



connectorhelp@powell.com



MEETING MODERN MEDICAL DEVICE NEEDS

When a life is on the line, every second is crucial, just like every connection. Modern medicine increasingly relies on electronic devices to improve the quality of life and medical care. Digitalization has enhanced the efficiency of medical care while reducing the burden on healthcare personnel, resulting in lower risks of medical accidents or mistakes.

Since medical equipment cannot fail, Powell works closely with the industry's top manufacturers to ensure we stock the latest in design and function evolutions, ensuring performance and reliability as we keep a pulse on the development of innovative solutions.

Honeywell

Switches & Sensors

 **NICOMATIC**

FFC & Membrane Switches

OMNETICS
CONNECTOR CORPORATION

Connectors

 **Quell**
A HEICO COMPANY

EMI Filtering Solutions

 **nVent**
SCHROFF

Electronics Packaging
& Protection

PRESSURE SENSORS - BOARD MOUNT



TruStability™
RSC Series



TruStability™
HSC Series



TruStability™
HSC Series



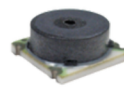
TruStability™
TSC Series



Basic ABP2
Series



Basic ABP
Series



Basic TBP
Series



MicroPressure
MPR Series



26PC
Series

PRESSURE TRANSDUCERS - HEAVY DUTY



13mm
Series



19mm
Series



MIP
Series



MLH
Series



FP5000
Series



SOT-23



flat
TO-92-style



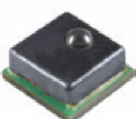
SOT-89B



SR16 Series,
SR17 Series

MAGNETIC SENSORS

FORCE SENSORS AND LOAD CELLS



13mm
Series



13mm
Series



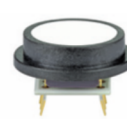
13mm
Series



13mm
Series



13mm
Series



13mm
Series



13mm
Series



13mm
Series

AIRFLOW SENSORS



Zephyr™HAF
Series (High Flow)



Zephyr™HAF
Series (Low Flow)



AWM40000
Series



AWM700
Series



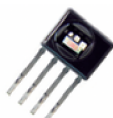
AWM90000
Series

GAS SENSORS



Oxygen Sensors,
OOMLF Series

HUMIDITY SENSORS



HumidCon™
Humidity/Temperature
Sensors; HIH6000, 6100,
7000, 8000 Series



HIH-5030/5031
Series (3 V)



HIH-4000
Series (5 V)



HIH-4602
Series



CIP (Clean in Place)
Series

SANITARY PRESSURE TRANSDUCERS

SUBMINIATURE BASIC SWITCHES



DM
Series



V7
Series



V15W
Series



ZD
Series



ZM
Series



ZM1
Series



ZW
Series



ZX
Series

TEMPERATURE SENSORS



500 Series
Packaged
Temperature Probes



192 Series
Thermistors



194 Series
Thermistors



2455R Series
Thermostats



HumidCon™
Humidity/Temperature
Sensors; HIH6000, 6100,
7000, 8000 Series



LP & LE
Series



5000
Series

PRESSURE SWITCHES

Medical Device Categories	Medical Devices	Board Mount Pressure Sensors	Board Mount Force Sensors	Airflow Sensors	Medical Gas Sensors	Temperature Sensors	Humidity Sensors	Particle Sensors	Pulse Oximetry Sensors	Magnetic Sensors (Motor/Position)	Limit & Basic Switches	Toggle Switches	Rocker & Push Buttons	Heaters	Heavy Duty Pressure	Pressure Switches	Barcode Scanner Software	Barcode Scan Engines
Respiratory	Ventilators, Anaesthesia, & Oxygen Concentrator	✓		✓	✓	✓	✓	✓	✓	✓	✓		✓	✓				
Dialysis & Infusion Pumps	Haemodialysis & Peritoneal dialysis Large Volume, Syringe & Insulin	✓	✓			✓			✓	✓	✓		✓					
Laboratory Equipment	Autoclave, Autosampler, Chromatography, Refrigerator	✓		✓	✓	✓	✓	✓		✓	✓	✓	✓	✓	✓		✓	✓
Consumer & Homecare	Blood Pressure, Breast Pumps, & CPAP	✓				✓	✓	✓	✓	✓	✓							
Patient Monitoring & Diagnostics	ICU, Hospital & Portable	✓		✓	✓	✓	✓	✓	✓	✓	✓		✓				✓	✓
Dental Equipment	Sterilization Equipment, Chairs, Compressor & Utility Tools	✓	✓			✓			✓	✓	✓		✓				✓	✓
Surgical Equipment	Robotics, Endoscopes, Suction, Fluid Management	✓	✓			✓			✓	✓	✓		✓					
Hospital Hardware	Asset Management, Beds, Cleaning & HVAC	✓		✓	✓	✓	✓	✓		✓	✓	✓	✓		✓	✓	✓	✓
Transportation & Storage	Dispensing Equipment, Refrigeration Tamperproof & Smart Packaging	✓				✓	✓			✓	✓		✓		✓		✓	✓

✓ Primary sensor/switch used within application (key design consideration for OEM).
 ✓ Secondary sensor/switch used within application (not a key design consideration).

Honeywell Confidential - ©2022 by Honeywell International Inc. All rights reserved.

PRODUCTS FOR FLEX CIRCUITS AND HMI SOLUTIONS

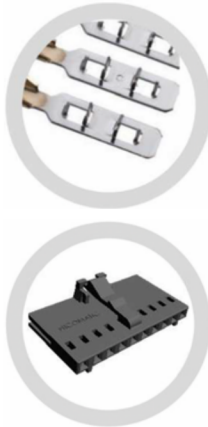
MMI



METAL DOME ARRAYS

SWITCH'AIR™ METAL
DOMES SMD LEDs

CRIMP



CRIMPFLEX™ CONTACTS

CRIMPFLEX™ HOUSINGS

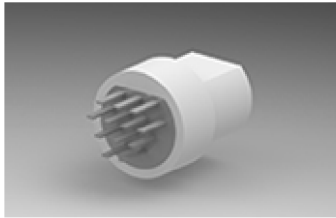
PBC



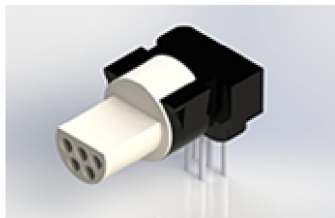
CRIMPFLEX™ HEADERS



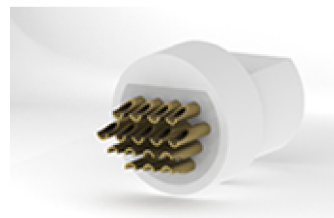
MICRO 360® PLASTIC CIRCULAR STRAIGHT TAIL (DD)



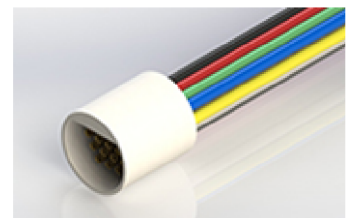
Straight Tail DD



Right Angle RA



Solder Cup SS



WD WC

The Micro Circular Series utilizes Omnetics' rugged and reliable Flex-Pin contact system. With the ability to withstand high shock and vibration while maintaining their electrical integrity, these connectors are ideal for the most demanding applications. Gold plated Beryllium Copper flex pins are capable of over 2,000 mating cycles.

OVERMOLDING SOLUTIONS



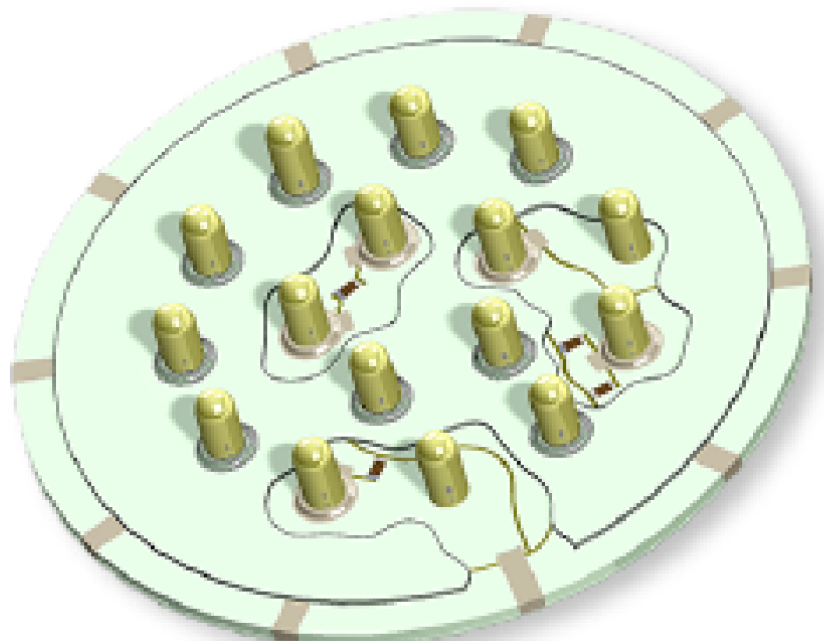
EMI FILTER AND ESD SOLUTIONS

Application-Specific Circuit Embedded in Silicon Rubber Ready in 24-48 hours



Medical applications require the highest level of reliability and accurate performance. There is no room for error caused by EMI interference or ESD Issues. Engineers need reliable, effective solutions fast. The last place anyone wants to face malfunction caused by interference is in a hospital or operating room.

Quell's EESeal EMI Filter and ESD Inserts were designed with these imperatives in mind. EESeal is a silicone rubber package technology with your application specific custom electronic circuit embedded inside. Each pin can be treated uniquely and custom samples can be shipped in 24-48 hours. EESeals are routinely at work in high-value medical devices keeping patients and healthcare personnel safe.



RACKS AND ENCLOSURES FOR TEST EQUIPMENT IN HEALTHCARE

nVent SCHROFF enclosures and racks undergo best-in-the-industry compliance testing to meet the highest safety and reliability standards. SCHROFF products are well suited for supporting test equipment, diagnostic imaging, radiation therapy, and healthcare information technology applications.



Table Top Testing & Measurement Equipment



Enclosures to House Equipment-Operating Controls and Various Testing Systems (Including Mobile Options)



Portable Custom Designed Test System