

Amphenol

COMMUNICATIONS SOLUTIONS

Commercial-Industrial Product Overview

Greg MacDonald – Global Distribution Manager

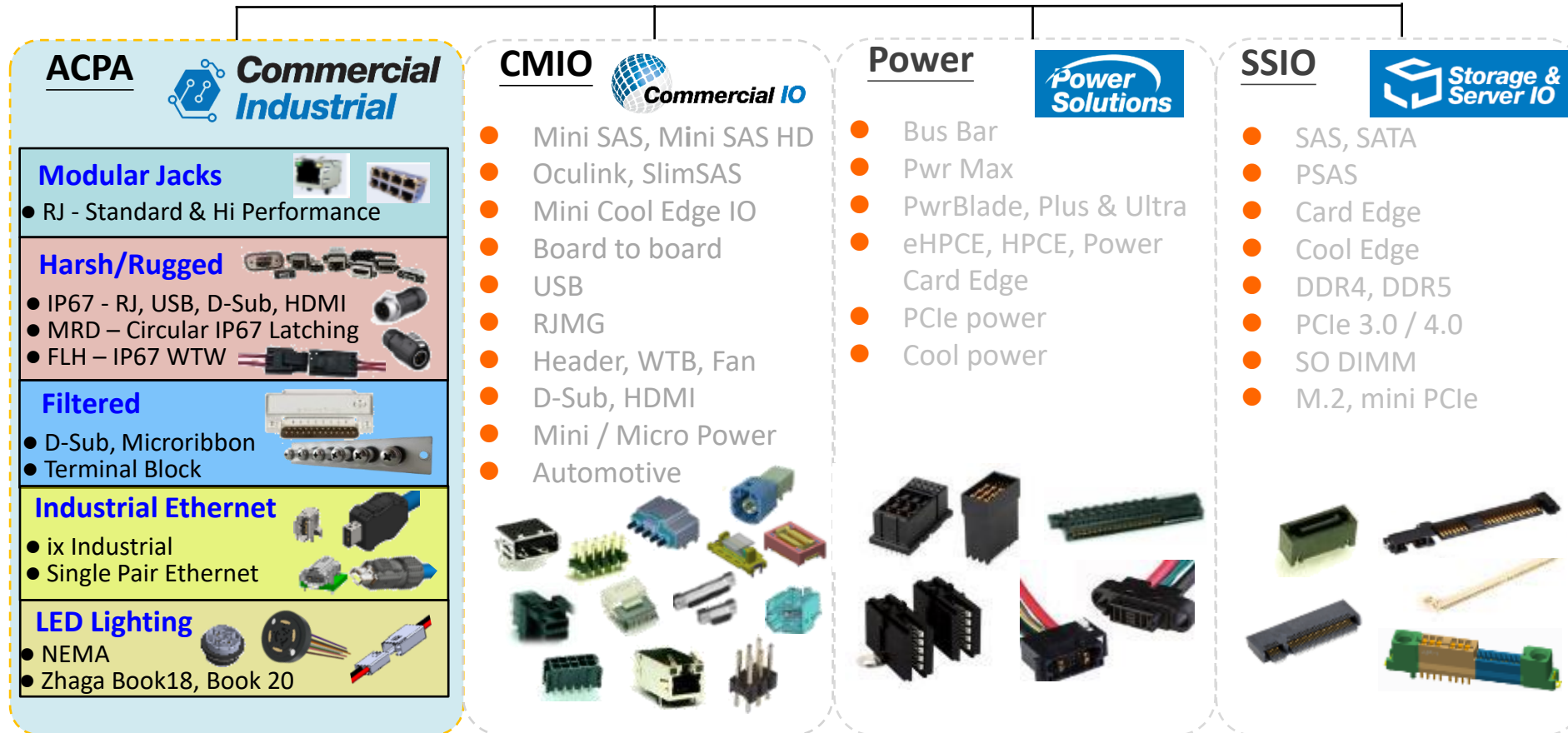
Commercial Industrial Products

July 2024



**Commercial
Industrial**

ACS Commercial Products



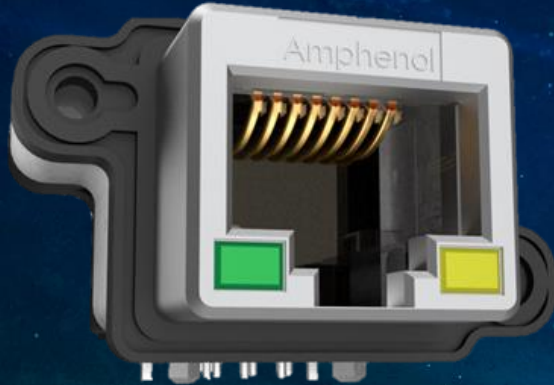
Broad Portfolio

Amphenol Commercial Products address a range of key Industrial markets, where the proliferation of high speed digital controls is driving interconnect needs.

- Automation
- Robotics
- Lighting (LED, PoE)
- Medical
- Energy
- Power Management
- Transportation
- Security
- Mining
- GPS



Ruggedized I/O for Harsh Environments



Amphenol

Enabling the Electronics Revolution

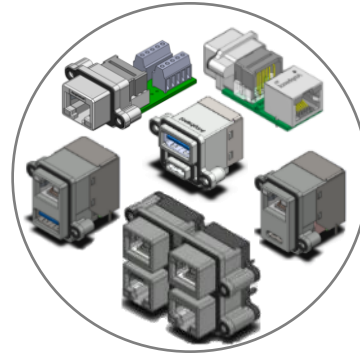
What are Harsh Environments?





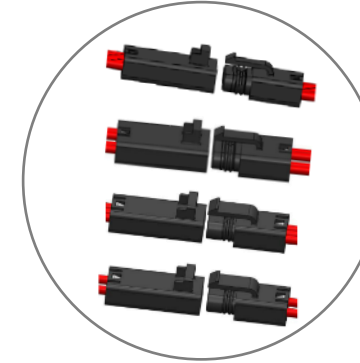
Ruggedized Standard Interfaces

IP67 – internally sealed and flange gaskets
Protects equipment from water ingress
Die cast metal housings
RJ, USB-A, Mini, Micro USB, USB-C, HDMI, D-Sub
Mate to standard connectors



Ruggedized Variants

IP67 sealed, die cast housings
Multiple ports in one housing
Combos (RJ/USB-A, RJ/USB-C, USB3.0/USB-C)
Cat5e/Cat6A RJs, Interposer options



FLH IP67 Wire to Wire

Miniature latching discrete wire interface
2, 3, 4, 6 position, 2.5mm pitch
Crimp contacts, pre-assembled seals
Up to 7 A rating, 250VAC, 22-18AWG wire



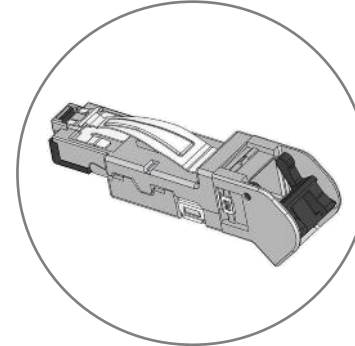
MRD Cable to Cable/Panel

IP67 Sealing in mated condition
Positive metal thumb latching
2 to 9 positions in size A and B housings
Metal, plastic body versions
Up to 10A rating, 500VAC



Ruggedized Accessories

Dust caps, port plugs, plug boots
Silicone rubber, metal grommets
IP67 sealing boots for standard RJ, USB cable assemblies



Industrial RJ Plugs

Up to Cat6A performance
Easy Field termination
Ruggedized performance
Adjustable cable exit



Filtered Connectors

D-Sub, Ribbon style, Terminal Blocks
Stress isolated design for filter capacitors
Provides protection against EMI
Variety of configurations, mounting
Can be used in place of non-filtered versions

What are typical applications for a Ruggedized I/O Connector?



Agricultural Equipment

- I/O on displays
 - Data loggers
 - On-board PCs



Consumer, Commercial products

- Drones
 - Charging docks
 - Tools



Outdoor Equipment

- Solar arrays
 - Batteries
 - Controllers,
 - HVAC



Handheld devices

- Ruggedized tablets, laptops
 - Mobile radios & phones
 - GPS devices

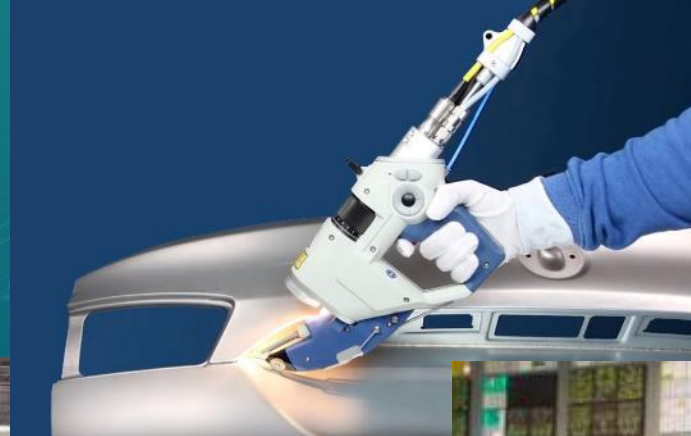


Outdoor Applications

What are typical applications for a Ruggedized I/O Connector?



Robots



Hand tools

Sensors

Actuators

Valves



Controls

Indoor Industrial Applications

What are typical applications for a Ruggedized I/O Connector?

Street
Lighting
Sensor
Connectors



Indoor Lighting



Horticulture
Lighting



Architectural
Lighting

LED Lighting

What are typical applications for a Ruggedized I/O Connector?

Defibrillators



Portable Patient Monitors



MRI Machines



Ultrasound Equipment



Robotic Surgery



Healthcare Applications

What are typical applications for a Ruggedized I/O Connector?



Radios,
Manpacks



Portable
Electrical
Equipment

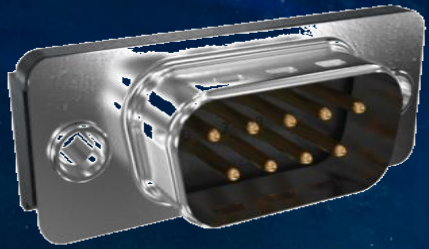


Ruggedized
Laptops,
Tablets



Military Applications

D-Sub Products



Amphenol

Enabling the Electronics Revolution

D-Sub Product Overview

Standard Board Mount Type

- RA and Straight Type
- Stamped & Machined Contacts



Accessories

- Right Angled, Angled, Straight Type
- Plastic, Metallic and Metalized Type Hoods
- Locking Devices- Female Screws, Lever Locks etc

Press Fit Type

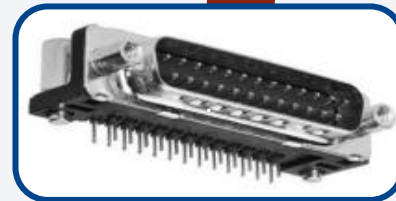
- Solderless Board locking .
- 09 to 50 position
- RA and Straight Type.
- Full Power Versions available



- ❑ Customized Dsub Connector Solutions
- ❑ Dsub Cable Assembly Solutions.

Pin-in -Paste Type

- Through hole parts in SMT mfg.
- 09 to 37 positions.
- RA and Straight Versions



High Density Version

- Board and crimp type cable connection.
- 15, 26 & 44 position contacts
- More number of contacts in basic shell sizes



Full/ Mixed Power

- Signal, Power & Coaxial Contacts
- Up to 75Amp contacts
- 2V2 to 36W4 layout options



Cable Connectors

- Crimp & Solder Bucket Type
- Stamped and Formed Contacts



Input Output Connectors- Dsub


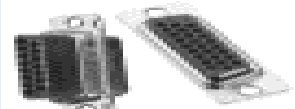
Stamped and Formed Contacts

Product Features and Benefits





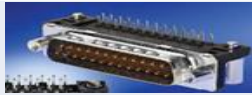

- Standards: DIN 41652 and MIL-C-24308 (Meet IEC60807)
- Current rating: 3A to 5A for stamped and formed contacts
- Operating Temp.: -55°C to +125°C; Durability: 200, 500+
- Orientation: Straight & Right Angle
- Termination: Solder tail, Press-fit, Pin-in-Paste / SMT (Reflow compatible)for board side; IDC, Solder cup, Crimp for cable side
- RoHS Compliant

Applications

Servo Drives, Test & Measurement Equipment, Access Control, Smart Metering, Portable Device, VTS, Projectors

Cable Side	
Solder Cup	Crimp
Standard and High Density	Standard Density, Housing & Contacts
SD: 9/15/25/37/50 AWG 20 HD: 15/26/44 AWG 24-28	SD: 9/15/25/37/50 AWG 20-28
	

Board Side

Solder Tail Straight	Solder Tail Right Angle	Press-fit Straight & Right Angle	Pin-in-Paste Straight	Pin-in-Paste Right Angle	SMT/ Slimline
Standard and High Density Standard and low profile	Standard and High Density	Standard Density Standard and low profile	Standard Density	Standard and High Density	Standard Density Std & Slim Type
SD: 9/15/25/37/50 Types: Frugal-D & Delta- D HD: 15/26/44	SD: 9/15/25/37/ 50 Eu Std:FP:10.4 Pitch:2.54 US Std:FP:8.08 Pitch:2.84 HD: 15/26/44	9/15/25/37/50 Eu Std, US Std, Eurostyle	SD: 9/15/25/37/50 Tray / T&E packaging	SD: 9/15/25/37 HD: 15/26/44 Tray / T&E packaging	9 way
Board locks, inserts, female screw locks (UNC, M3)	Board locks, brackets, inserts, female screw locks (UNC, M3)	Board locks, inserts, female screw locks (UNC, M3)	Pegs, inserts, posts, female screw locks (UNC, M3)	Board locks, inserts, female screw locks	Zero or low force insertion, inserts, female screw locks
					

Input Output Connectors- Dsub Machined Contacts

Product Features and Benefits

- Mil-C24308 standard interface & Meet IEC60807
- Current rating: 7.5A for screw machined signal contacts, 10A to 75A for power contacts
- Orientation: Straight & Right Angle
- Operating Temp.: -55°C to +125°C; Durability: 200, 500+, Mil grade
- Wide choices of Hoods and locking devices

Applications

Switching, Transmission & Data centre, Railway, Medical Devices
Avionics, Windmills etc..



Industrial grade DP series (Std Density)	Combo DW series Signal, Power and Coaxial Contact (up to 75A)	Military Grade DM series (Std Density)
Solder cup, Solder tail Straight, R/A, Wire Wrap	Solder cup, Solder Tail Straight, R/A, Wire Wrap	Solder cup, Crimp, Solder Tail Straight, R/A, Wire Wrap, Combo
9/15/25/37/50 Board locks, brackets, inserts, female screw locks (UNC, M3)	2V2 to 36W4 Full Power & Combo layouts Board locks, brackets, inserts, female screw locks (UNC, M3)	9/15/25/37/50 5W1 to 36W4 HE501
		

Focused Market Segments and Applications.

Factory Automation



Control Systems
PLC, DCS, HMIs, SCADA



Data Communications
Serial Communications



Robotics
Robot Controllers, Drives, End Effectors



Power Supplies
Servo Power Supplies, AC/DC Power Supplies

Test & Measurement



Electronic Test & Measurement
Data Acquisition Systems, Signal Analyzers,



Environmental Test Equip
Temp Chambers, Humidity Chambers



Semiconductor Test Equipment's
Plasma Etching , Batch Processing



Non-Destructive Test Equipments

Energy Management



Energy Meters



Building Automation



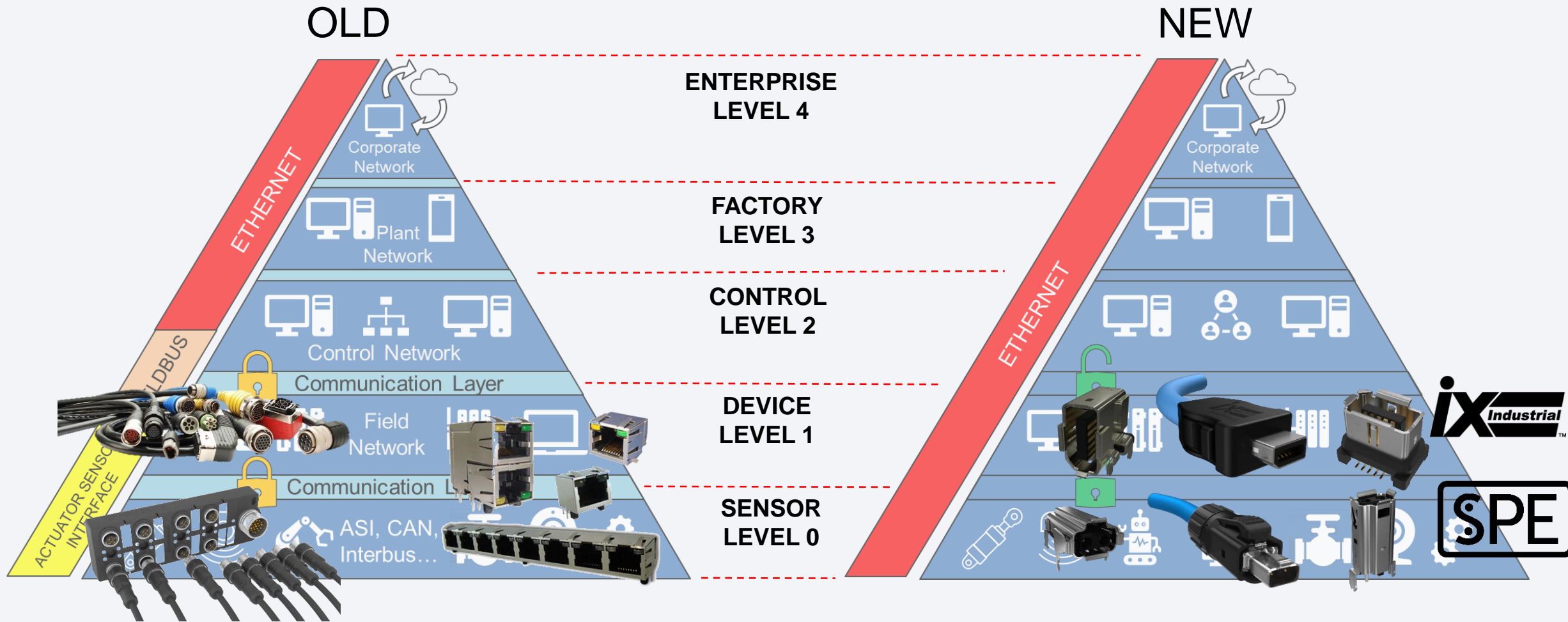
Renewable Energy

Industrial Ethernet Next Generation Connections

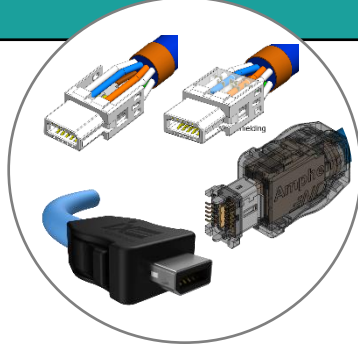


Amphenol

Enabling the Electronics Revolution



IP20



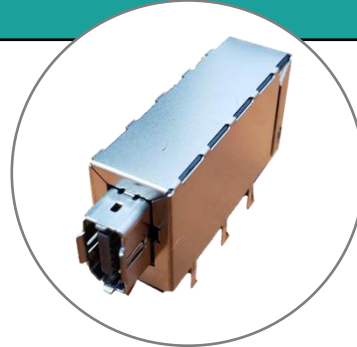
IP20 Plugs

Rugged 2 point metal latches
Solder for hi volume cable assy
Field installable IDC
Fully shielded throughout
Cat6a performance
Keyed mating



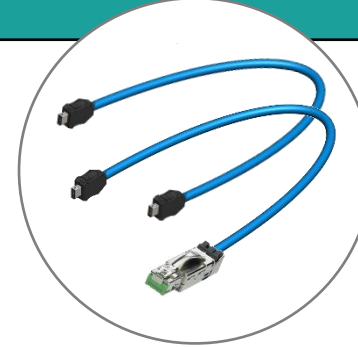
IP20 Receptacles

Vertical, Right angle "Flag", Right Angle
75% smaller than typical RJ Connector
10mm connector pitch
Robust shield pcb tails



ixMag Receptacles

PCB mount ix Receptacle
Fully integrated magnetics
DC isolation transformers and
common mode rejection chokes
PoE++ per IEEE802.3bt

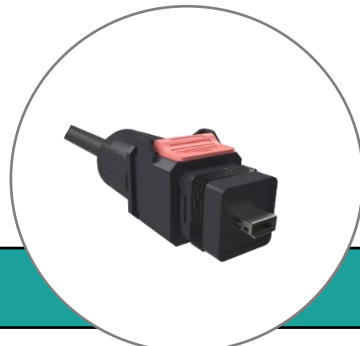


IP20 Cable Assemblies

ix to ix, ix to RJ, ix to M12
Standard and Custom lengths
Tested to meet Cat6A

- Features / Benefits**
- 75% smaller than RJ45
Increased density
 - Ruggedized design
Ideal for factory use
 - PoE++ compatible
Data-line powered device expansion
1.5A/contact = 200W
 - Fully shielded
Optimized EMI and SI
 - IP6X sealed version
Protects equipment in wet environments
 - Chip-set compatible
Fully compatible with existing PHY chipsets and magnetics

IP6X



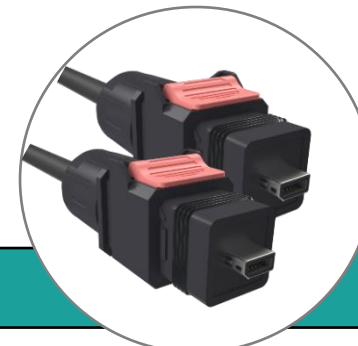
NDH series IP6X Plugs

IEC Push-Pull rectangular option for positive secure latching
Sealing O-Rings and gaskets ensure water tight protection
Cat6A performance, field installable IDC or solder pads
Fully shielded throughout entire mated interface



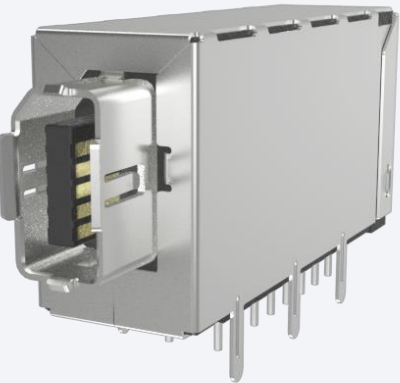
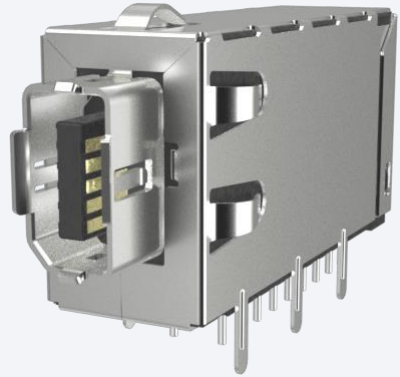
NDH series IP6X Receptacles

Panel Mount bulkhead adapter
Uses standard IP2p pcb receptacle
Provides positive, IP67 sealed latch to plug
Protects equipment and the mated interface

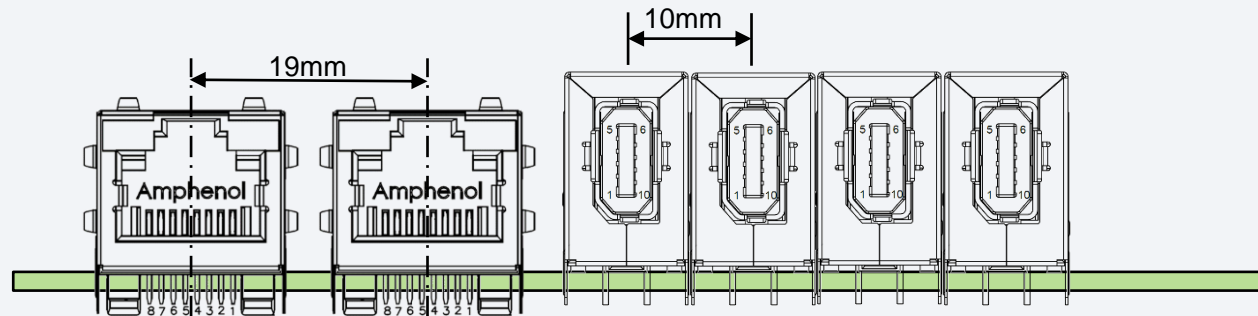
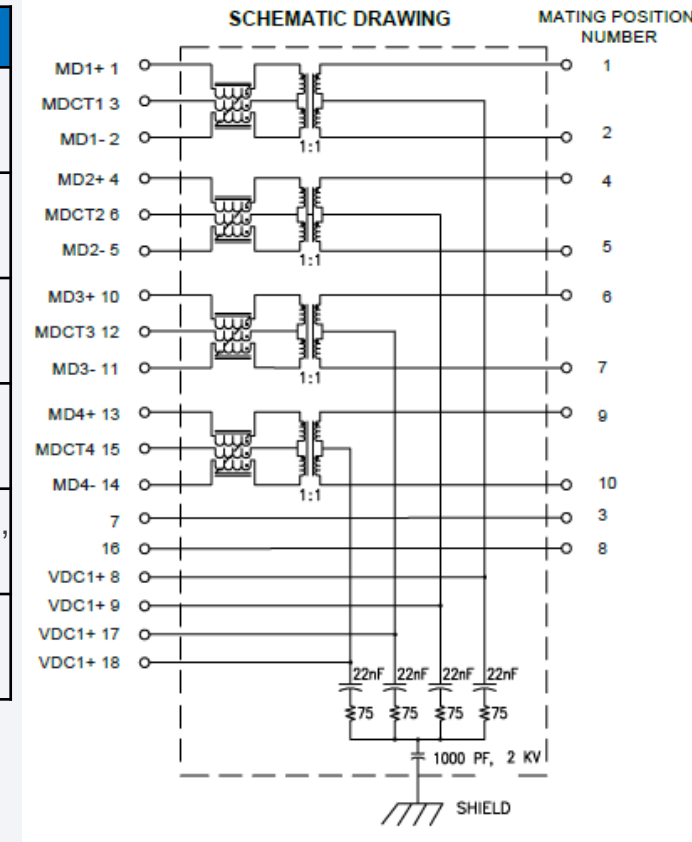


NDH IP6X Cable assemblies

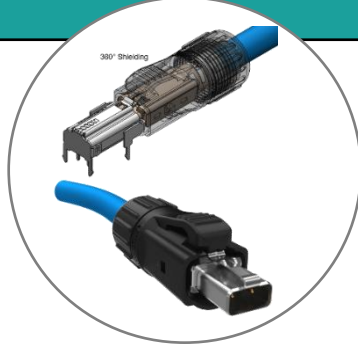
ix to ix, other interfaces possible.
Standard & customer lengths
Variety of cable options (4, 8, 10 conductor, etc)



Features	Benefits
100BaseT, 1000BaseT, 10GBaseT performance	IEC 61076-3-124 mating interface standard; Direct replacement of larger devices (RJ45) for Ethernet applications.
EMI Shield Options with keyed mating	EMI protection ensures signal integrity, available panel grounding tabs. Keyed housing prevents mis-mating.
Integrated Magnetics	Galvanic isolation and DC biasing from the Ethernet cable; Common Mode noise rejection between PHY chip and cable.
PoE++ Compatible per IEEE 802.3bt	Provides ability to power devices over the Ethernet cable, eliminating separate power supply requirements.
10mm center to center spacing	Consumes the same panel space as the non-magnetics version, allowing high density applications
Gold plating options on contact area	Options available for different applications based on environmental protection and number of mating cycles.



IP20



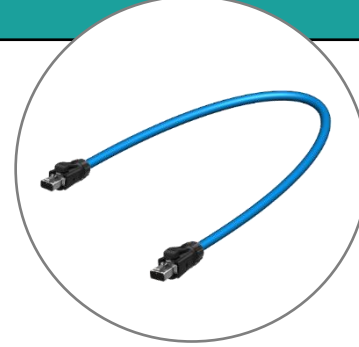
IP20 Plugs

Rugged metal latch
Solder for hi volume cable assembly
Field installable IDC or crimp contacts
Fully shielded throughout
Cat5 performance
4A rating with 18AWG
PoDL capable



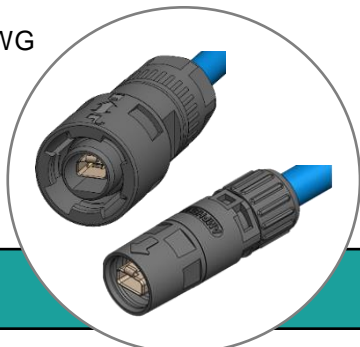
IP20 Receptacles

Vertical, Right angle pcb through hole
Robust shield pcb tails
Small footprint on pcb



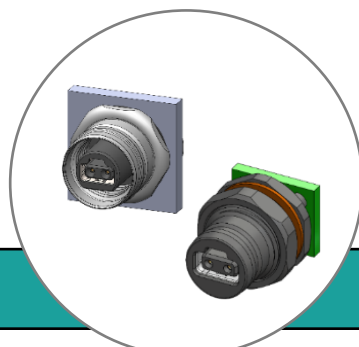
IP20 Cable Assemblies, Pigtails

100BASE-T1 to 40m IEEE802.3bp
100BASE-T1 to 15m IEEE802.3bw
10BASE-T1 to 1km IEEE802.3cg
Lightweight 2 wire cable



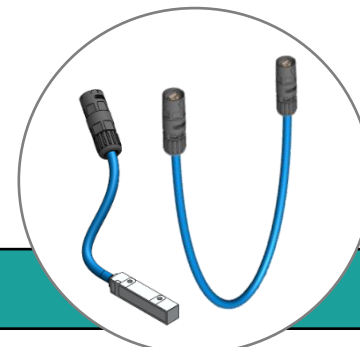
IP6X Plugs

IEC Push-Pull Coupling ring option for positive secure latching
Snap-Lock option for easy mating/unmating
Sealing O-Rings and gaskets ensure water tight protection
Field installable IDC or crimp; Fully shielded



IP6X Receptacles

Panel Mount with sealing gasket
Pcb solder termination, vertical or right angle
Provides positive, IP67 sealed latch to plug
Protects equipment and the mated interface



IP6X Cables, Pigtails

SPE to SPE, SPE to sensor/actuator
Standard & customer lengths
Variety of cable options (4, 8, 10 conductor, etc)

Features / Benefits

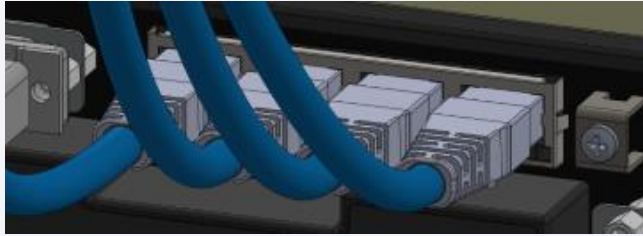
- Small Size
Suits small devices
- Ruggedized design
Ideal for factory use
- PoDL capable
Data-line powered device expansion
4A/contact = 150W
- Fully shielded
Optimized EMI and SI
- IP6X sealed versions
Protects equipment in wet environments
- Uses 2 wire cable
Thinner, lighter
More flexible
Tighter bends
Reduced COST

IP6X

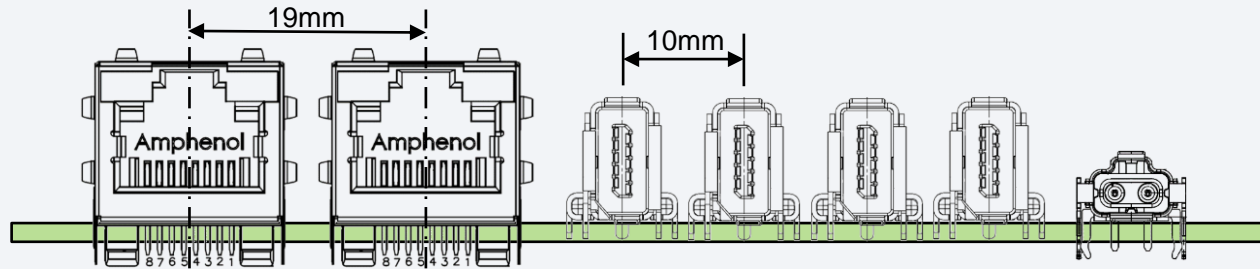
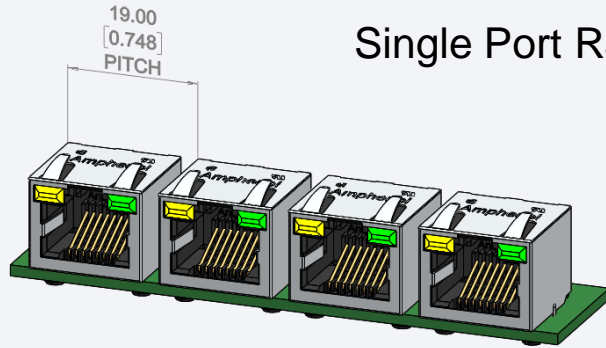
Benefits of a Small Form Factor

Size – Mating Face, Width and Height

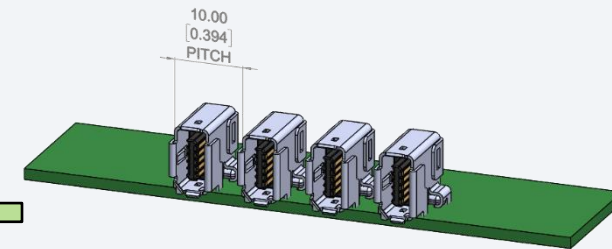
Small Form Factor saves valuable space on a PCB and panel, allowing much greater port density as well as reduced height requirements for constrained applications.



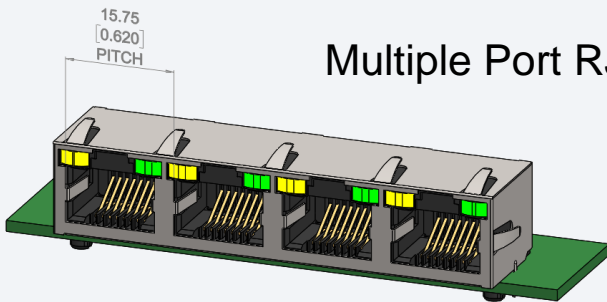
Single Port RJ45



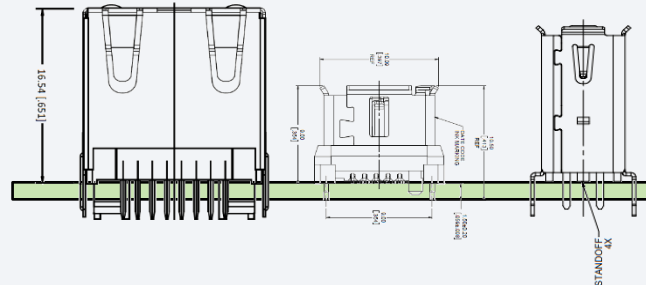
ix Industrial™ Right Angle



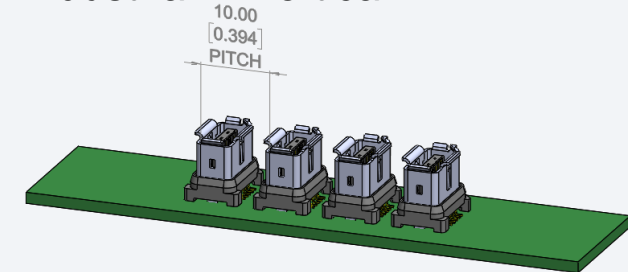
Multiple Port RJ45



ix Industrial™ 40% shorter than vertical mount RJ45



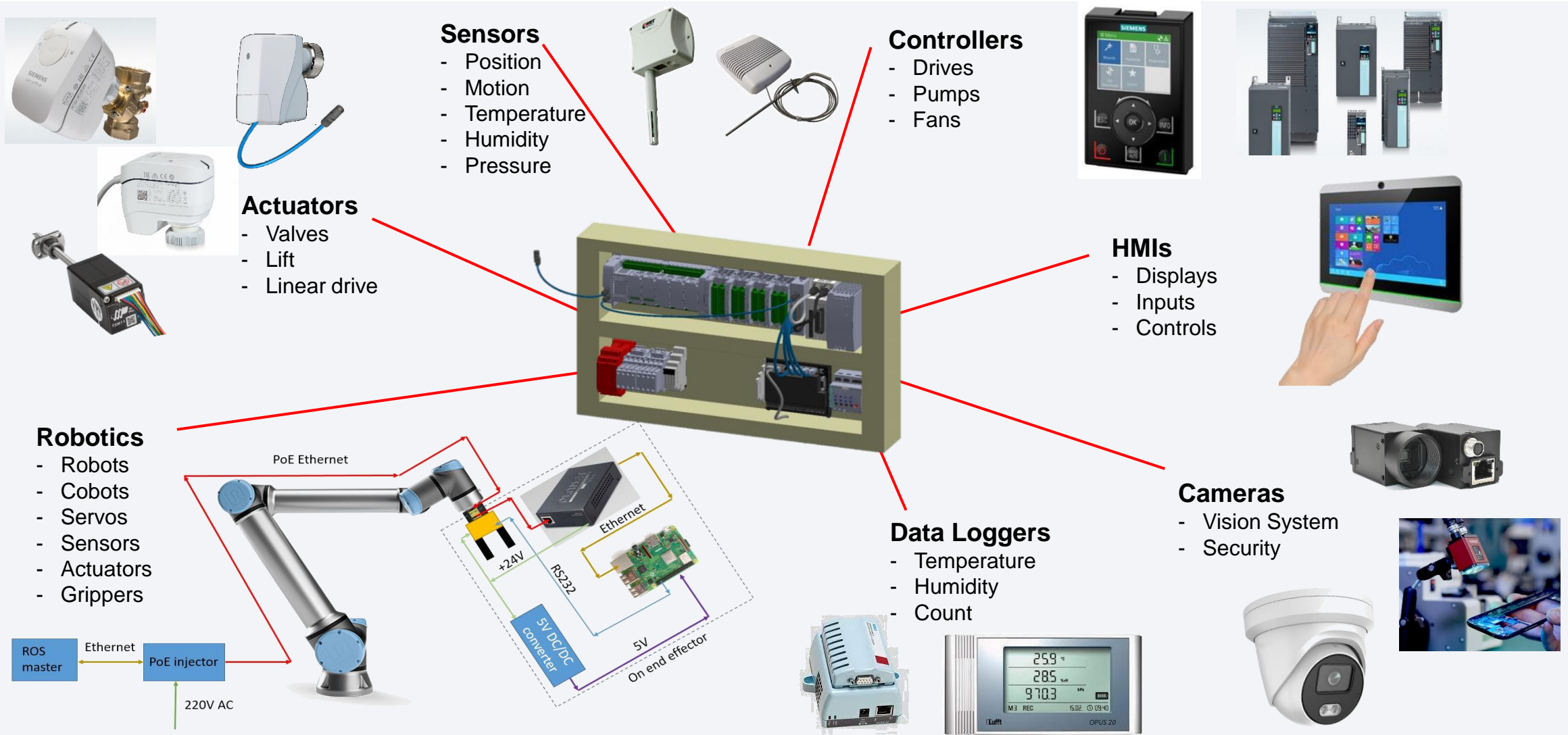
ix Industrial™ Vertical



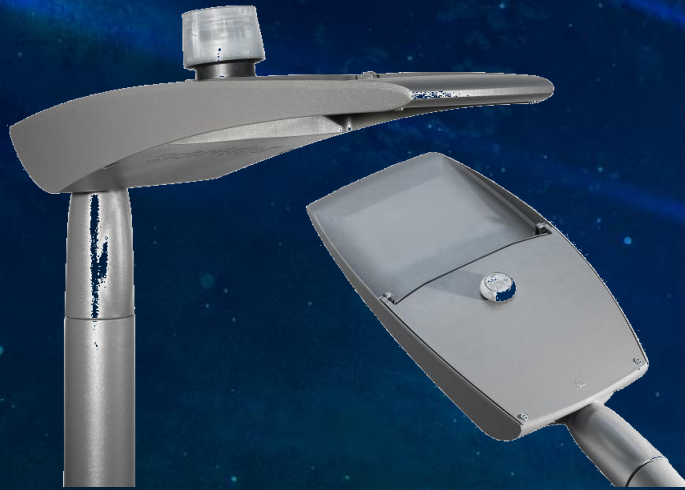
ix Industrial™ & SPE are 75% smaller than a standard RJ45 Modular Jack

Applications

Typical Device Examples – SPE & ix Interconnects Providing PoDL and PoE++



Lighting Products



Amphenol | Enabling the Electronics Revolution



FLA Series - NEMA/ANSI C136.41

- Receptacles, Caps, Bases, Domes, Gaskets
- Fixed, Rotatable, Tool-less receptacles
- Pre-terminated pig-tailed leads
- IP65 sealed to Luminaire and between receptacle and base or cap



FLS Series - Zhaga Book 18

- Receptacles, Caps, Bases, Domes
- Fixed receptacle, IP65 sealed to Luminaire, Cap, Base
- Poke-in wire termination
- DALI interface to Dimming and Sensor modules

- Complete solutions for NEMA/ANSI C136.41 and Zhaga Book 18 Standards
- Provide dimming and sensor functionality to LED Roadway luminaires and for Smart City applications

Modular Jacks



Amphenol

Enabling the Electronics Revolution



High Performance Mod Jacks

15+ Product Series - Cat5e, Cat6, Cat6A
Vertical, R/A; Single, Multiport, Stacked Integrated
PCB for standalone capability
No additional compensation required
Standard, Low, Recessed, Profiles
PoE Compatible
Combos (USB)



New RJ Products

RJE1R - Stacked 2x1
Cat5e/Cat6 performance in both ports
RJE4E - Stacked RJ over USB Type C
Cat5e
RJSGE - 2x2 Cat5e, Press-fit
RJE3A - Single port, SMT, Cat5e



RJ Mag - Standard

1G performance
1 port (RA & vert), multiport, stacked,
Stacked USB Combos
Tab up, tab down
Short Body, Long Body (PoE)
Profiles: Standard, Low, Insert
Through Hole, SMT
PoE, PoE++



Standard Modular Jacks (RJ)

30+ Product Series; Single, Multiport, Stacked
Cat3/Cat5 performance, PoE Compatible
Standard, Low, Ultra-low and Recessed, PTH, SMT
Tab-Up, Tab-Down, Shields, LEDs, Vertical, R/A
High temp materials for reflow soldering



RJ Mag - High Performance

2.5G - 1 port, 1x4, 2x4, 2x6, PoE
5G - 1 port, 1x2, 1x4, PoE; 1 port Low profile
10G - 1 port, 1x2, 1x4, tab up/down; PoE++ 90W & 120W
- 1 port RA, Vertical, 45 degree

- High performance connectors are classified as Cat5e, Cat6, and Cat6A

Performance	Standard	Transmission Rate	Max Ethernet Speed	Cable Length	Applications
Category 3	10BASE-T	up to 16MHz	10 Mbps	100m	Phones, Modems, POS terminals
	100BASE-T4				
	100BASE-T2				
Category 5	100BASE-T	up to 100MHz	100 Mbps	100m	Switches, Routers, Hubs
	1000BASE-T				
Category 5e	1000BASE-T	up to 100MHz	1 Gbps	100m	Improved Hubs, switches, fast-Ethernet
	2.5GBASE-T		2.5 Gbps		
Category 6	5GBASE-T	up to 250MHz	5 Gbps	100m	New installations set up with CAT6/Cat6A cabling in preparation for higher speed requirements. Such as data centres, hospitals and medical centres, government facilities, etc.
	10GBASE-T		10 Gbps	Up to 55m	
Category 6A	10GBASE-T	up to 500MHz	10 Gbps	100m	

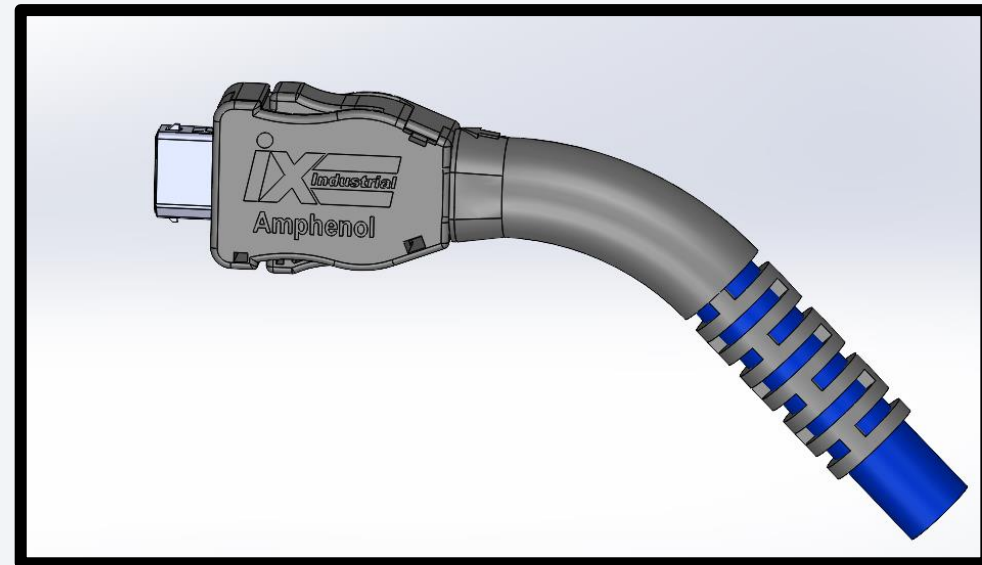
- Cat5e modular jacks can process 1,000 bytes of data in the same amount of time a standard connector can process 10 bytes.
- Cat6/Cat6A connectors can process 10,000 bytes of data in the same amount of time a Cat 5e connector can process 1,000 bytes.

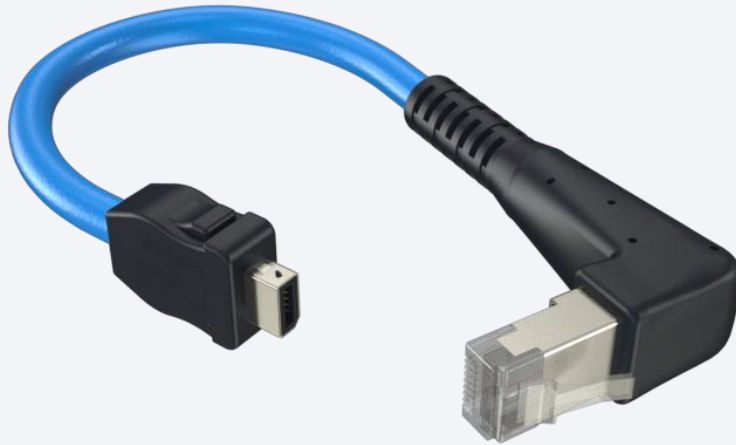
Amphenol provides Cat5e, Cat6, Cat6A



Ix Over molded design tested with special push pull force for healthcare customer (samples can be ordered)

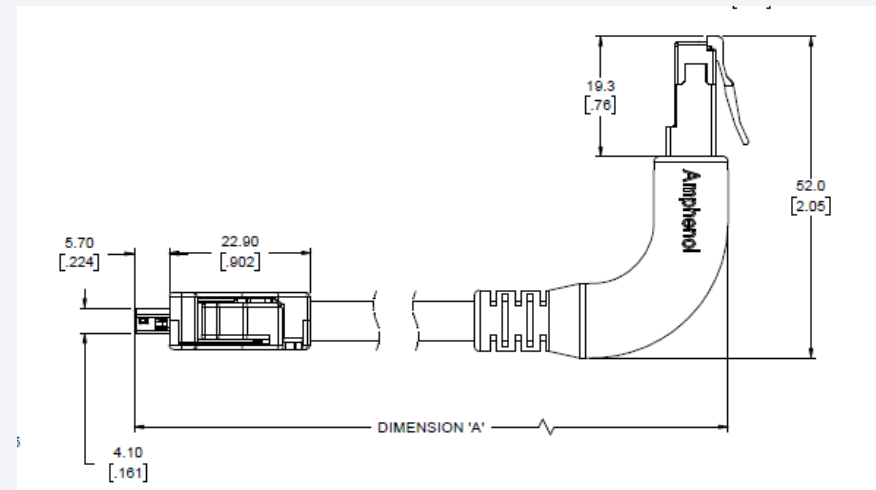
Ix Over molded design with 45 deg angle (samples can be ordered)

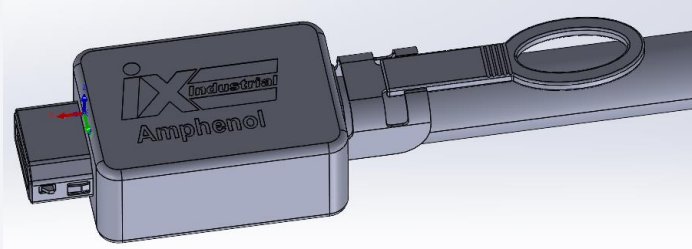




Ix Cable assembly with hard R/A RJ design
(samples can be ordered)

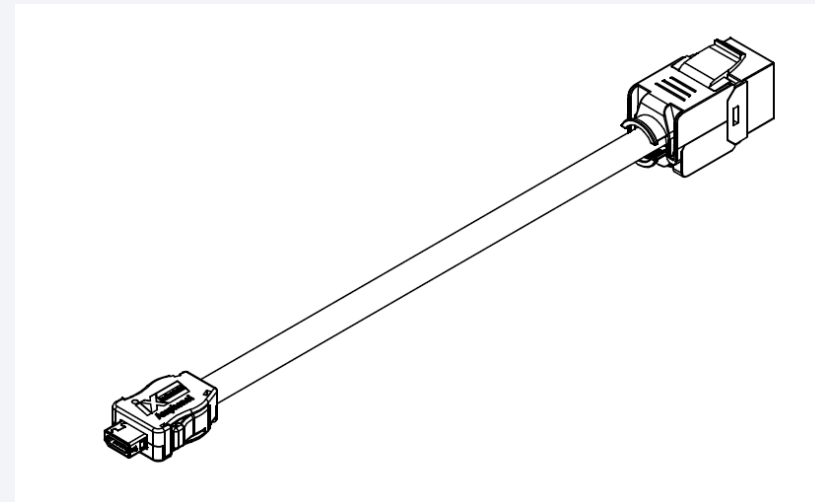
Ix Cable assembly with flexible R/A RJ design
(samples can be ordered)





Ix plug with pull tab for latching (design proposed)

Ix Cable assembly to female RJ (design proposed)



ix Industrial & SPE Engineering Sample Kits



Engineering “Design Kit” for ix Industrial IP20 applications

- Includes products that can be installed into systems

All kits contain:

- IDC Plug components
- PCB mount Receptacles
- Full 0.5m Cable Assembly
- Demo Board
- Assembled demo Plug

Engineering “Design Kit” for SPE IP20 applications

- Includes products that can be installed into systems





Engineering “Design Kits” for

- NEMA/ANSI C136.41
- Zhaga Book 18
- Zhaga Nook 20
- Samples that can be installed into systems
- Intended for Design Engineers



Industrial IO & Lighting Solutions

Amphenol ICC

ix Industrial™ IP20 Connectors

ix Industrial™: Next Generation Industrial IoT Connectivity

ix Industrial™ connectors enable IoT connectivity for Ethernet and other industrial protocols through all levels of an operation from the Enterprise/Cloud to the sensors/actuators at the factory floor. These 10mm pitch connectors feature 2-point metal latches are just 25% of the size of an RJ45 connector, and as such allow much greater port density and mating security. They are PdB capable, provide data performance to Cat6 level (10GBASE-T), and feature 360° shielding through the mated pair for superior EMI protection.

TARGET MARKETS

- Increased port density compared to RJ45
- High data rate performance for 10G Ethernet, with PoE capability
- Excellent EMI protection for noisy environments
- Robust 2-point metal latches for secure mating
- Fully interchangeable with ix Industrial™ products from other authorized vendors

FEATURES

- Complies with IEC60716-3-24
- 75% smaller than RJ45
- 10 position connector with Cat6 10GBASE-T performance and PoE capability
- 360° shielding through mated pair
- 2-point metal latching
- Heavy duty shield solder hold-down tab on PCB for receptacles
- 5000 mating cycles
- Field terminable IDC plugs with solder options

BENEFITS

- Fully qualified second source interchangeable with other vendors' products
- 10mm connector pitch provides greater port density

ix Industrial™ IP20 Connectors

TECHNICAL INFORMATION

MATERIAL

- External Shields: Stainless steel, nickel plated (plugs) or tin plated (receptacles)
- Insulators: Thermoplastic, UL94V-0
- Contacts: Copper alloy plated with gold over nickel (mating area)

MECHANICAL PERFORMANCE

- Insertion/Withdrawal Force: 25N (5.6 lbf-force) max. (IEC 60512-13-2, Test 13b)
- Push-Out Force: 80N (18 lbf-force) min. (IEC 60512-15-6, Test 10f)
- Mechanical Shock: 300m/s², half-sine pulses, 10ms (IEC 60512-4-3, Test 6c)
- Vibration, Sinusoidal: 10Hz – 500Hz, 0.35mm, 50m/s² (IEC 60512-6-4, Test 6d)
- Durability: 5000 mating cycles (IEC 60512-9-1, Test 9a)

ELECTRICAL PERFORMANCE

- Current Rating: 1.5A @ 40°C (per IEC 60512-5-2, Test 15b)
- Voltage Rating: 50V AC max, 60V DC max
- Initial Contact Resistance: 30mΩ max. (per IEC 60512-2-1, Test 2a)
- Shielding Resistance: 100MΩ max. (per IEC 60512-2-1, Test 2a)
- Insulation Resistance: 500MΩ min. @ 500V DC (per IEC 60512-3-1, Test 3a)
- Dielectric Withstanding Voltage: 500V DC (per IEC 60512-4-1, Test 4a, Method A)

PACKAGING

- Tray (Plug Connectors)
- Carton (Cables)
- Tape & Reel (SMT Receptacles)

PART NUMBERS

Description	Part Numbers
Receptacle, Type-X, Plating-Y, Right Angle Plug, SMT	NDR-K31Y-00
Receptacle, Type-X, Plating-Y, Right Angle Horizontal, SMT	NDR-K31Y-00
Receptacle, Type-X, Plating-Y, Vertical SMT	NDR-K31Y-00
Plug, Type-X, Plating-Y, IDC Termination, 28AWG-28AWG	NDR-KP1Y-00
Plug, Type-X, Plating-Y, IDC Termination, 28AWG	NDR-KP1Y-00
Plug, Type-X, Plating-Y, Solder Pad	NDR-KP1Y-00

X = Key (A, B or C)
Y = Contact Plating: 1=Gold Flash; 2=4µm Gold; 3=30µm Gold; 4=50µm Gold; 7=30µm PdNi-Gold Flash

www.amphenol-icc.com

Commercial Industrial

Amphenol ICC

FLA Series Dimming Receptacles, Caps and Gaskets

DIMMING RECEPTACLES, CAPS AND GASKETS, FOR ROADWAY AND OUTDOOR LIGHTING

FLA Series Dimming Receptacle – ANSI C136.41 is designed with power and dimming/signal contacts to provide a connection between dimmable photocell and the luminaire for commercial and utility lighting. The locking type receptacles are available in fixed or rotatable configurations and are compliant with ANSI C136.41 FLA Dimming Receptacles feature UL94V-0 high temperature resistant housings and are rated up to 15A per power contact. NEMA/ANSI FLA-C Caps are available with open circuit, short circuit and short circuit with MOV function. FLA-ZN Series mounting gaskets are also available in EPDM or Silicone Rubber versions for better water protection.

TARGET MARKETS

- 0, 2 or 4 dimming contacts options
- Rohs Compliant
- UL94V-0 high temperature resistant housing
- Operating temperature range from -40°C to +85°C

FEATURES

- 0, 2 or 4 dimming contacts options
- UL94V-0 rated high temperature resistant housing
- Receptacle comes pre-terminated with power wire ranging from 18AWG to 14AWG rated at 105°C or 150°C
- Rotatable configurations available
- Tool-less rotatable configurations available
- EPDM or Silicone Rubber gaskets available
- Protective caps with shorting or non-shortening function and integrated sealing gasket
- Rohs compliant

BENEFITS

- Supports Power only, or power plus 1 or 2 sets of dimming and/or additional control functions
- Ensures application safety
- Ease of integration into new or existing light fixtures
- Enhanced 360-degree alignment capability
- Spring mounted, no tools required to install or adjust
- Silicone gasket provides higher temperature capability and enhanced set resistance
- Ensure environmental protection in absence of a dimming/photocell sealing gasket
- Rohs compliant

www.amphenol-icc.com

Commercial Industrial

Amphenol ICC

Zhaga Book 20 Compliant – FLM Series

DALI INTERFACE CONNECTORS FOR INDOOR LUMINAIRES

The FLM Series products are compliant with the Zhaga Book 20. Zhaga Book 20 specifies 2 position connectors identified as Luminaire Extension Module Receptacles (LEX-MR) and Luminaire Plug (LEX-LP), used for DALI-2 (Digital Addressable Lighting Interface) applications. DALI-2 is a smart interface protocol between indoor luminaires and sensors and communication modules.

Amphenol's standardized Book 20 FLM Series connectors allow modules to connect to the LED driver and control system. The modules can be easily field serviced and replaced when necessary. The FLM Series connectors are available in Wire-to-Wire and Wire-to-Board configurations. The pin contact receptacles (LEX-MR receptacles) are available as right angle or vertical PCB mount with SMT tabs, or as wire termination housings for use with crimp contacts (purchased separately). The socket contact connectors (LEX-LP plugs) are available for use with wire crimp contacts (purchased separately), or with integrated contacts with poke-in wire termination.

TARGET MARKETS

- Dimple latching with Poke-Yoke mating alignment feature
- DALI-2 bus enables bi-directional communication between luminaires and modules
- Plug available with tool-less poke-in termination

FEATURES

- 34-20 applications
- Proof contact protection
- Poke Yoke features
- Right angle and Vertical
- Shaped molded contacts (available on receptacles)
- Roof design

BENEFITS

- Enables DALI-2 protocol and ensures correct mating alignment during soldering process
- Provides secure mating, with easy unmating
- Versatile design options
- Holds SMT connectors to board in secure orientation during soldering process
- Options allow high volume assembly, or easy field assembly/servicing
- Housing protects contacts in unmated condition

CC.COM Amphenol Information Communications and Commercial Products

FEATURES

- Rohs Compliant
- High current capabilities up to 8A with 18AWG wire gauge

WIRE TO WIRE (W2W) SEALING IN MATED CONDITIONS

- Compact design
- High current design options (8A – 18AWG, 5A – 20AWG, 3A – 22AWG)
- Offer connector systems with header and receptacle counterparts
- Rohs compliant

BENEFITS

- Ensure waterproof and reliable connections in harsh environment
- PCB space saving
- Allows design flexibility and meets various power expectations
- Ease of design and assembly
- Meets environmental, health and safety requirements

www.amphenol-icc.com

Commercial Industrial

Amphenol ICC

MRD Series Rugged Circular Locking Connectors

IP67 HARSH INDUSTRIAL CONNECTORS

MRD series connectors are available in 2, 3, 4, 5, 6, 8 and 9 position form factors. Housing options include all plastic constructions as well as metal locking bodies for greater durability. Locking options include 1/3 turn bayonet locking as well as quick release metal latches. Panel mount and cable termination options are available with or without finger proof protection.

TARGET MARKETS

- IP67 in the mated conditions water/dust Proof
- Power or signal connections
- Available in 2, 3, 4, 5, 6, 8 and 9 position form factors
- Circular shape
- Locking option

BENEFITS

- IP67 in the mated conditions water/dust proof
- Design flexibility
- Supports high power applications
- Supports various industrial applications
- Secured connection and avoids data/power interruption
- Meets environmental, health and safety requirements

www.amphenol-icc.com

Commercial Industrial

Amphenol ICC

18 Compliant FLS Series

RECEPTACLES AND DOMES

The FLS Series products are compliant with Zhaga Book 18. The FLS Receptacle is designed with 4 contacts for Power, DALI and Digital I/O, and mounts on a Luminaire. The mating FLS Base (extension Module) and Dome (together form the housing for a Photocell/Sensor Module assembly).

The receptacle is compatible with and mates to all Photocells built with an Amphenol Book 18 Base/Extension Module which is available in both 40mm and 50mm diameters, as well as any of our Zhaga Book 18 extension modules.

A Zhaga Book 18 protective cap is also available for receptacles which do not have a photocell connected to them. Typical applications are for roadway and smart city lighting. Sensor modules manufactured with the Amphenol Zhaga Book 18 Base and Dome are used to provide dimming control, wireless connectivity, a variety sensing and other functions.

TARGET MARKETS

- Receptacle has tool-less wire termination (poke home wire termination)
- Receptacle mounts to luminaire in a single hole with mounting nut and gasket
- Receptacle mates with Photocell is IP65/IP66 rated

FEATURES

- Compliant with Zhaga Specification Book 18
- 4 contacts for Power and DALI
- Single-hole-mount with gasket and nut
- Tool-less Receptacle contacts for 20AWG – 18AWG wire with poke-in wire termination
- Base available in 40mm and 50mm diameters
- Strong polycarbonate domes snap onto Base with integral sealing O-Ring
- UL94-V0 high temperature material
- Rohs compliant

BENEFITS

- Compatible with Zhaga luminaires and fixtures, and mating products
- Supports functionality for smart lighting controls, sensor applications, and wireless communication
- Easy and simple installation, seals to IP65/IP66
- Easy installation
- Application flexibility
- Domes provide rugged, sealed protection to module electronics, ensuring reliable operation in harsh environments
- Wide operating temperature range from -40°C to +85°C
- Meets environmental, health and safety requirements

www.amphenol-icc.com

Commercial Industrial

Amphenol ICC

2.50mm Pitch Connectors

RECEPTACLES AND PLUGS

2.50mm pitch connectors are available in 2, 3, 4, 5, 6, 8 and 9 position form factors. Housing options include all plastic constructions as well as metal locking bodies for greater durability. Locking options include 1/3 turn bayonet locking as well as quick release metal latches. Panel mount and cable termination options are available with or without finger proof protection.

TARGET MARKETS

- IP67 in the mated conditions water/dust proof
- Power or signal connections
- Available in 2, 3, 4, 5, 6, 8 and 9 position form factors
- Circular shape
- Locking option

BENEFITS

- IP67 in the mated conditions water/dust proof
- Design flexibility
- Supports high power applications
- Supports various industrial applications
- Secured connection and avoids data/power interruption
- Meets environmental, health and safety requirements

www.amphenol-icc.com

Commercial Industrial

Amphenol ICC

2.50mm Pitch Connectors

RECEPTACLES AND PLUGS

2.50mm pitch connectors are available in 2, 3, 4, 5, 6, 8 and 9 position form factors. Housing options include all plastic constructions as well as metal locking bodies for greater durability. Locking options include 1/3 turn bayonet locking as well as quick release metal latches. Panel mount and cable termination options are available with or without finger proof protection.

TARGET MARKETS

- IP67 in the mated conditions water/dust proof
- Power or signal connections
- Available in 2, 3, 4, 5, 6, 8 and 9 position form factors
- Circular shape
- Locking option

BENEFITS

- IP67 in the mated conditions water/dust proof
- Design flexibility
- Supports high power applications
- Supports various industrial applications
- Secured connection and avoids data/power interruption
- Meets environmental, health and safety requirements

www.amphenol-icc.com

Key Resources

Key Contacts:

Global Distribution Manager

- Greg Macdonald (Toronto)
- gregm@amphenol-acpa.com
- 416-230-0822

Product Managers:

Harsh / Filter

- Anas Waheed (Toronto)
- anasw@amphenol-acpa.com
- (416) 669-0189

Modular Jacks (RJ):

- Nishad Dravid (Toronto)
- nishadd@amphenol-acpa.com
- 416-579-4039

LED Lighting Connectors:

- Sarath Narayanan (Toronto)
- sarathn@amphenol-acpa.com
- 416-829-0808

Industrial IO:

D-Sub & USB:

- Dwayne Williams (Toronto)
- dwaynew@amphenol-acpa.com
- 416-754-5658

Product Marketing Director

- Peter Swift (Toronto)
- pswift@amphenol-acpa.com
- 647-201-4840

Product Marketing Director

- Javier Soros (Toronto)
- javiers@amphenol-acpa.com
- 416-389-0305

Available on AICC Web Site:

- <https://www.amphenol-icc.com>
- Customer Drawings
- 3D Model files
- Engineering product Specs
- Product Data Sheets
- Cross References to Competitor Part Numbers

Harsh Environment:

<https://www.amphenol-icc.com/connectors/rugged-io.html>

Lighting Connectors

<https://www.amphenol-icc.com/connectors/lighting.html>

ix Industrial:

<https://www.amphenol-icc.com/product-series/ix-industrial-ip20.html/>

Single Pair Ethernet:

<https://www.amphenol-icc.com/product-series/single-pair-ethernet-ip20.html>

Modular Jacks:

<https://www.amphenol-icc.com/connectors/modular-magnetic-jacks.html>

Visit our New Lighting Application Resource

<https://www.amphenol-icc.com/applications/lighting.html>

Visit our New Lighting Industrial Ethernet Application Resource

<https://www.amphenol-icc.com/industrial-ethernet>

Amphenol is a member of the SPE
Industrial Partners Network.

<https://www.single-pair-ethernet.com>

Thank You