

 **AirBorn**

Bringing Your Innovations To Life

Corporate Capabilities



High-Quality
Interconnects
& Value-Added Services



Companies today are looking for strategic partners to collaborate with and grow

AirBorn is an employee-owned company whose core business is engineering and manufacturing specialized connectors and electronic components for Original Equipment Manufacturers (OEMs) worldwide. We provide electronic components and services to leading companies in industries including **Military/Defense, Commercial Air, Medical, Industrial,** and **Space Exploration.** Our all-inclusive Model-to-Market® service shepherds your product from the barest of concepts through to mass production.

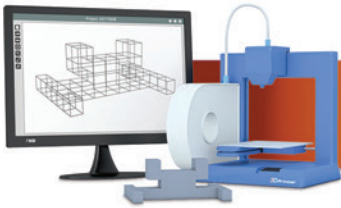
Beginning with front office personnel and extending to the teams working the factory floors, AirBorn's culture embraces both Six Sigma and LEAN Manufacturing Principles. AirBorn products are trusted to perform in extreme conditions where complete reliability is vital to success. Customers count on AirBorn products and have since our inception in 1958.



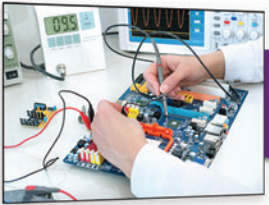
Concept
Development



Detailed Design
& Engineering



Quick-Turn
Prototyping



Test, Qualification
& Quality



Manufacturing
Low to High Volumes



Global Packaging
& Distribution

Model-to-Market[®]

AirBorn's engineering group specializes in new product design and development for OEMs across the globe. Our team of 50+ degreed engineers are the most innovative and committed to solving our customer's challenges, but that's only the beginning of where we can help!

Customers can leverage our design and manufacturing expertise throughout the entire product development process. From **Conceptual Design, Prototyping, Pilot-Runs** through to **Mass Production**, our teams work efficiently to cut down your program's time to market.

Our global sales presence, coupled with our choice of strategic global distribution partners, means greater responsiveness when procuring our products — no matter where you do business!



Corporate Locations & Capabilities

	Addison, TX	Georgetown, TX	Lake City, PA	Little Falls, MN
Product Specialties	<ul style="list-style-type: none"> R-Series connectors W-Series connectors 	<ul style="list-style-type: none"> AOC connectors & cables Cable assemblies & harnesses High-speed, signal-integrity solutions M-Series connectors N-Series connectors R-Series connectors 	<ul style="list-style-type: none"> Cable assemblies & harnesses Power supplies 	<ul style="list-style-type: none"> Automation/clean-room assembly Connector stampings & components High-speed signal integrity solutions R-Series connectors
Manufacturing Specialties	<ul style="list-style-type: none"> CNC machining Electronic connector manufacturing Screw machine shop 	<ul style="list-style-type: none"> Electronic connector manufacturing Harness assemblies for electronic use manufacturing 	<ul style="list-style-type: none"> Electronic connector manufacturing Harness assemblies for electronic use manufacturing Printed circuit assembly (electronic assembly) manufacturing 	<ul style="list-style-type: none"> Automation design & manufacturing Connector manufacturing Machinery manufacturing Metal crown, closure, & other metal stamping Mold tool design & manufacture Special tool & die, die set, jig, fixture design & manufacturing Stamp tool design & manufacture
Manufacturing Capabilities	<ul style="list-style-type: none"> Automated epoxy & contact lubricant dispensing Automatic contact clipping CNC machining & tool/die <ul style="list-style-type: none"> Engineering drawings downloaded directly Contact assembly, loaders, insertion Heat staking Injection molding <ul style="list-style-type: none"> Insert molding capabilities, engineering plastics: PPS, DAP, nylon, LCP Laser marking Machining capabilities <ul style="list-style-type: none"> mold fabrication, secondary machining, wire EDM Optical/video inspection of tools & finished components Resistance welding Robotic contact bending Robotic solder dipping Screw machine shop SMT lead forming Ultrasonic welding 	<ul style="list-style-type: none"> 3 & 4 axis CNC machines & tool/die <ul style="list-style-type: none"> Supports nano shell requirements, micro D shells & backshells Crimping Epoxy mixing & dispensing Hot bar/hand soldering to IPC 620 Laser wire & cable stripping Mechanical wire & cable cutting Mechanical wire & cable stripping Plasma etching Resistance welding Robotic potting Robotic solder dipping Screw machine for nano hardware SMT lead forming UV epoxy curing Vapor degreasing VC2 clean environment Video jet & laser marking Wire braiding 	<ul style="list-style-type: none"> Aqueous cleaning Batch ovens for drying & curing Clean environment for microelectronic assembly Flow ovens for soldering surface mount components Harness board wiring Hot bar/hand soldering to IPC 620 Induction soldering Injection molding Ink jet printing Machining Pick-and-place equipment for placing surface mount devices on PCBs Plasma etching Selective soldering Solder pot wire tinning (leaded & RoHS) Spray booth Vacuum de-gas Wire & cable cut and strip Wave soldering 	<ul style="list-style-type: none"> 3D printing Automated connector assembly Automated contact assembly Epoxy mixing & dispensing High-speed stamping Hot bar/hand soldering to IPC 620 Insert molding Laser wire & cable stripping Metal finishing reel-to-reel plating <ul style="list-style-type: none"> Tin, tin lead, gold, selective, associated process controls Plastic injection molding Resistance welding Video jet & laser marking
Qualification & Control Capabilities	<ul style="list-style-type: none"> QE2 Optical/video inspection <ul style="list-style-type: none"> 13" monitors Microscopes Optical comparators Test automation Nadcap certified hardware passivation 	<ul style="list-style-type: none"> Environmental, electrical, mechanical test lab <ul style="list-style-type: none"> Continuity, DWV, Resistance testing, digital pulse analysis, heat chamber, product development testing, qualification testing, root failure analysis, salt spray, signal integrity testing, shock table, thermo chamber, validation & verification testing, vacuum chamber, x-ray/CT scan, L1 & L2 techs IPC - space addendum certified trainer 	<ul style="list-style-type: none"> Automated tensile testing Crimp height monitoring Electrical testing <ul style="list-style-type: none"> Continuity, DWV & resistance Environmental testing Ionic contamination testing 	<ul style="list-style-type: none"> Atomic absorption (AA) measures concentration of metals in solution Class 1,000 clean room Differential scanning calorimeter (DSC), measures melt temperature for solder & plastics Cirris electrical testing <ul style="list-style-type: none"> Continuity, DWV, resistance Probe inspection technology (Ziess) QE2 Vision inspection (OGP) XRF equipment for measurement of coating thickness

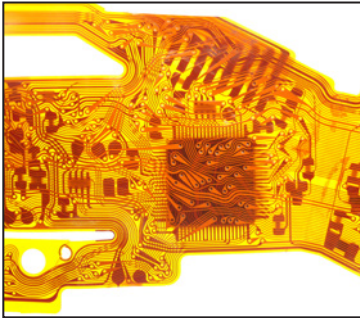
Taunton, MA	Toronto, Canada	Edenbridge, UK	Other
<ul style="list-style-type: none"> • Cable assemblies & harnesses • Fiber-optic cables & assemblies <ul style="list-style-type: none"> – Glass & plastic – ST, SC, LC & SLA terminations • High-level assemblies (HLAs) <ul style="list-style-type: none"> – Electromechanical assemblies – Frame builds – Power distribution panels • Printed circuit board assemblies 	<ul style="list-style-type: none"> • Design & DFM assistance • Flex & rigid-flex assembly 	<ul style="list-style-type: none"> • Cable assemblies & harnesses • M-Series I/O, Solder cup, pigtail 	<ul style="list-style-type: none"> • Flexible circuit assemblies
<ul style="list-style-type: none"> • Custom battery assembly manufacturing • Custom harness assemblies <ul style="list-style-type: none"> – Wire, cable, fiber optic, coax & polytubing • Electromechanical assembly • Fiber-optic cable manufacturing • NPI, test and R&D builds • Printed circuit board assembly manufacturing 	<ul style="list-style-type: none"> • Extended length flex up to 100 ft. • Flex: 10 layers • Full, in-house assembly • High-density edge connection flex • Rigid flex: 15 layers • Sculptured flex • Supply chain management solutions 	<ul style="list-style-type: none"> • Electronic connector manufacturing • Harness assemblies for electronic use manufacturing 	<ul style="list-style-type: none"> • Bare printed circuit board manufacturing
<ul style="list-style-type: none"> • Automated pull testing to 1,000 lbs. • Automated wire cutting/stripping <ul style="list-style-type: none"> – Multi-conductor, coax, ribbon, fiber optic • Automated wire twisting • Battery pack assembly • Braiding, nylon & tin copper • Custom assembly potting • Custom connector potting • Custom flex bar assemblies • Epoxy mixing & dispensing • Fiber optics assembly, glass & plastic • Harness assemblies • Injection molding • In-line laser & holstamp wire marking • Large-gauge wire terminating up to 500 MCM • Laser stripping • Logic device programming • PCB assembly <ul style="list-style-type: none"> – SMT, thru-hole, hybrid – 0201 - 12 mil pitch devices including BGA/LGA • Ribbon cable assembly • Ultrasonic cleaning 	<ul style="list-style-type: none"> • Flex assembly specifications <ul style="list-style-type: none"> – 1/2 oz. minimum copper clad thickness, 10:1 maximum hole aspect ratio, 92 mil maximum board thickness, 4x4 mil trace width & spacing, high-speed & high-temperature constructions • Flex Assembly Capability <ul style="list-style-type: none"> – BGA, crimping, conformal coating, eccobond, hand soldering, RoHS capable, SMT (machine soldering), wave soldering • Materials <ul style="list-style-type: none"> – LCP – Polyimide: AP, FR, LF, TK • Surface finishes <ul style="list-style-type: none"> – Bright tin, ENIG, hard gold, HASL, immersion silver, tin-lead, OSP • Signal shielding <ul style="list-style-type: none"> – Cross-hatch copper, silver ink epoxy, solid copper 	<ul style="list-style-type: none"> • Banair ATE • Contra helically laid cables • Crimping • Drying/curing ovens • Epoxy dispensing • Function generator & oscilloscope • Hand soldering to IPC 620 • Harness board wiring • Manual solder dipping • Mechanical wire & cable cutting & stripping (multi-conductor & coax) • Plasma etching • Prototype potting mold tooling • Solvent degreasing • Video jet part Marking 	<ul style="list-style-type: none"> • 1/4 oz. Minimum Copper Clad Thickness • 24" x 30" Panel Sizes • 240mm maximum board thickness • 34 layers • 3x3mm line width & spacing • Assembly capability <ul style="list-style-type: none"> – 0.25 mm pitch potting, SMT, thru-hole • Backplane manufacturing • CNC machining • Injection molding • Laser drilling & laser skiving • Micro-via capability
<ul style="list-style-type: none"> • Automated pull test • Automated optical inspection • Certified IPC trainer on site • Cirris electrical testing <ul style="list-style-type: none"> – Continuity, hi-pot, resistance, linear components • Electrical testing <ul style="list-style-type: none"> – ICT, FCT • Ionic contamination testing • IPC 610, IPC 620, IPC 7711/7722, IPC 620 space addendum, IPC J-STD-001, IPC J-STD-001 space addendum • Thermal testing • Xray 	<ul style="list-style-type: none"> • AS9100 Rev. D • CGP certified • Environmental testing • Full FAI capability • IPC 6013/IPC 600/IPC 610 Class 3 • IPC J-STD-001 • ISO9001:2015 • MIL-PRF-50884/31032 • Panel & assembly electrical testing • UL 94V0/V1 on many constructions 	<ul style="list-style-type: none"> • Automated tensile testing • Cirris electrical test equipment <ul style="list-style-type: none"> – Continuity, DWV, resistance testing • Crimp height monitoring • IPC trainer 	<ul style="list-style-type: none"> • Environmental testing • Leakage test chamber • Panel & assembly electrical testing



Wire & Cable Assemblies

Value-Added Services

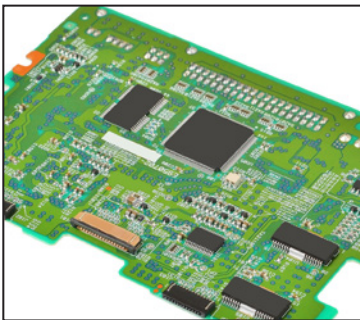
While connectors are at our core, AirBorn is much more than a “connector company”. We proudly manufacture **Cable** (including Active Optical & Fiber Optics), **Flexible Circuit**, and **Printed Circuit Board Assemblies**.



Flexible Circuit Assemblies

We also fabricate complete **Chassis/Box Builds**, **Power Supplies**, **Wiring Harnesses** and offer **Engineering**, **Qualification**, & **Lab Services**. Our teams are highly trained and well equipped to deliver the finest quality product every time.

With all of our customer-centric services offered under one roof, we eliminate markups that come with managing multiple suppliers — reducing lead times and saving customers time and money.



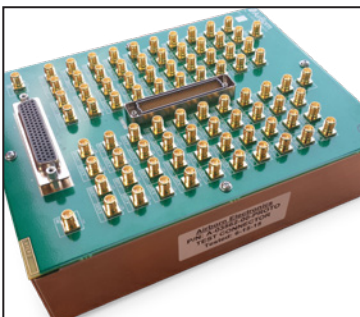
PCB Assemblies



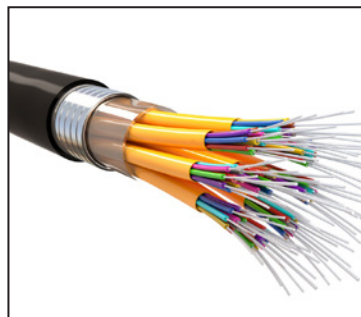
Lab Services



Power Supplies



Box Builds



Fiber-Optic Cabling

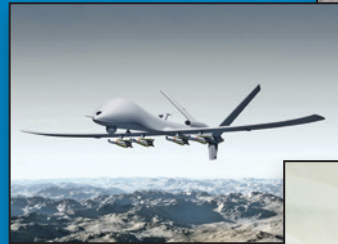


Partner With AirBorn



Because Product Reliability
Is A Matter Of Life Or Death

Because Dependability Is
Vital To The Mission's Success



Because Superior Design & Durability
Ensures We Stay Safe



Because You Need
Out-Of-This-World Accuracy



Because Rugged Components
Keep You Running & Profitable

The AirBorn Advantage

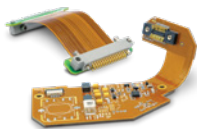
Model-To-Market Solutions



Custom Power Systems



COTS VPX Power Supply Power Blade



Flexible Circuit Assemblies



Cable Assemblies



FUZE Assemblies



Active Optical Assemblies



Rectangular W Series



Rectangular R Series



Micro D M Series



Nano D N Series



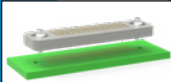
High-Speed Rectangular verSI



Modular Hybrid Snergy



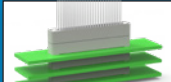
Macro D Rocket



Z Axis Interposer Z Series



High-Speed Micro D microSI



Stackable RC Series



Circulars Series 360



Strip Connector AirStrip



PowerAmp 13A or 23A



Rugged Circulars TriMate

CAPB-2.24

AirBorn

p. 512.863.5585
www.airborn.com

